

SOFT WINDOW FASHIONS ROMAN SHADES



JULY 2024

ROMAN SHADES

view
phaseii.com



TABLE OF CONTENTS

ROMAN SHADE STYLES	4
BANDING OPTIONS	22
LIFT SYSTEM OPTIONS	24
ROMAN SHADE CONSTRUCTION	26
CHILD SAFETY	27
LIMITED LIFETIME WARRANTY	28

JULY 2024



view our
roman shades



ROMAN SHADES

PLAIN CLASSIC PLEATED
FLAT FOLD
SOFT FOLD/HOBBLED
EUROPEAN/RELAXED
FRONT SLATS

Roman Shades offer
the **fashion**
of soft drapery while
providing
the **function**
of blinds & shades.

flat fold roman shades:
nonomi, petal pink



ROMAN SHADE STYLES

- > Pictured are standard ROMAN SHADES, no valances
- > Valances are included on CCO & Motorized (outside mount only) shades only:
- > See page 24 for the lift systems

PLAIN CLASSIC
PLEATED



FLAT FOLD



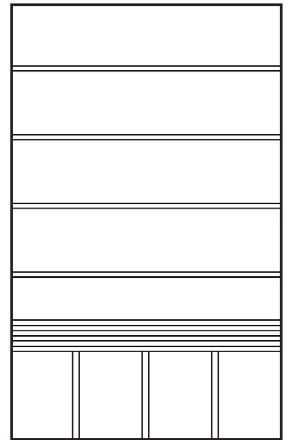
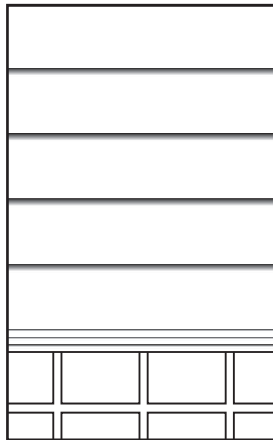
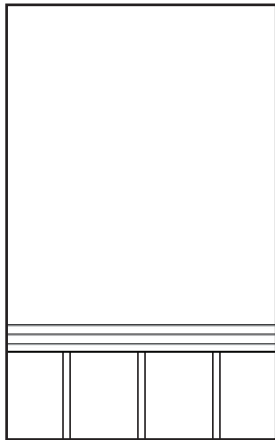
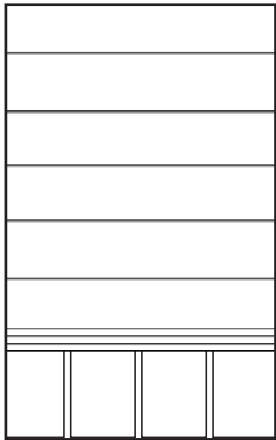
SOFT FOLD/
HOBBLED



EUROPEAN/
RELAXED



FRONT SLAT



PLAIN CLASSIC
PLEATED

	minimum	maximum
width	12"W	115"W
length	16"L	120"L

FLAT FOLD

	minimum	maximum
width	12"W	115"W
length	16"L	120"L

SOFT FOLD/
HOBBLED

	minimum	maximum
width	12"W	115"W
length	16"L	120"L

EUROPEAN/RELAXED

	minimum	maximum
width	30"W	115"W
length	16"L	120"L

FRONT SLAT

	minimum	maximum
width	12"W	48"W
length	16"L	120"L

* outside mount only

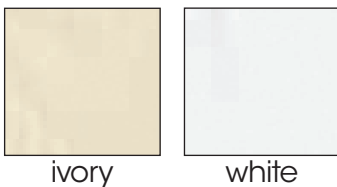
STANDARD LIGHT FILTERING LINING

- Basic light weight lining:
70% polyester/30% cotton
- Protects fabric from the sun
- Provides neutral color to outside
- 54"W



THERMAL SATEEN LINING

- Light filtering
- Medium weight 100% polyester
- Smooth sheen finish
- 1 pass acrylic latex foam backing
- Provides protection from heat & cold and protects from UV rays which could lead to fading
- 54"W



100% PREMIUM BLACKOUT LINING

- Heavy weight lining: 100% polyester
- Blocks out 100% sunlight
- 3 pass acrylic latex foam backing
- Although we take every precaution to avoid piercing this lining, on the Plain Pleated shade style, some light seepage may still occur in intense sun conditions
- 54"W





view gallery
of installs



pleated drapery: cara, mink
with plain classic pleated roman shade: cara, natural

PLAIN CLASSIC PLEATED

Best choice for solid and striped fabrics – a structured, contemporary look which requires minimal dressing.

- > Rear support pockets on the back of the shade create neat pleats which stack very efficiently and look great with most fabrics.
- > All fabrics look good with this style, but it should be noted that pleats can interrupt prints and patterns, especially diamond-based designs.

PLAIN CLASSIC PLEATED		
	minimum	maximum
width	12"W	115"W
length	16"L	120"L



plain classic pleated roman shade: austin, sand



view gallery
of installs



flat fold roman shade: birdsong, coal



plain classic pleated roman shades: copley stripe, black



view gallery
of installs

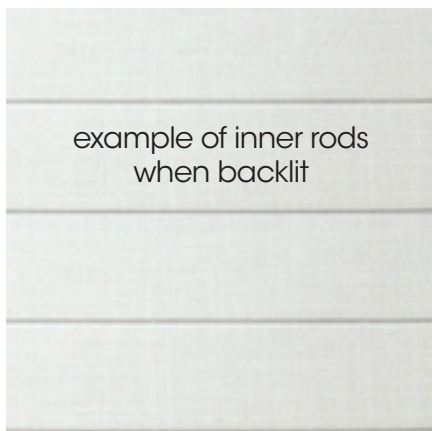


2 flat fold roman shades, inside mount: ander, sapphire
with extra wide flat fold, outside mount: nasco, denim

FLAT FOLD

Best choice for patterns – a simple, elegant, tailored design with no horizontal pleats.

- > This simple & plain style is an excellent choice for fabrics with large scale patterns that look best without interruption. When fully extended the entire pattern is displayed.
- > Tack stitches used to attach the cord and rings are visible on the face of the shade.
- > Inner rods can be visible when backlit.
- > When first installed this style should be pulled up fully and left in place several days to create “pleat memory”.



example of inner rods when backlit

FLAT FOLD		
	minimum	maximum
width	12"W	115"W
length	16"L	120"L



flat fold roman shade: artesia, vista blue



view gallery
of installs



flat fold roman shade: java, barley



flat fold roman shade: varick, domino



view gallery
of installs



soft fold/hobbled roman shade: twilight, black pearl with matching grommet panels pair (back) and grommet panel pair (front) featured on satin nickel decorative rod: bergamo, charcoal, unlined

SOFT FOLD/HOBBLED

Face fabric hobbled onto the lining at regular 6" intervals creates cascading soft folds.

- Patterns with a large repeat will appear slightly interrupted by each fold.

SOFT FOLD		
	minimum	maximum
width	12"W	115"W
length	16"L	120"L



soft fold/hobbled roman shades: fiori, mist

EUROPEAN/RELAXED



view gallery
of installs



european/relaxed roman shade: turbo, cloud
with pleated drapery pair featured on antique brass decorative rod: birdsong, seaglass

Fabric swoop curves upward when raised. The european/relaxed shade gathers in soft, unconstructed folds.

- > Small tack stitches used to attach the cord rings are visible on the face of the shade. When first installed this style should be pulled up fully and left in place several days to create "pleat memory".
- > Outside mount only
- > Be advised: This shade takes manual adjusting to achieve the desired effect. It is not recommended for frequent use, but more as a decorative shade.
- > Not available Cordless; only available CCO.

EURO/RELAXED		
	minimum	maximum
width	30"W	115"W
length	16"L	120"L

One scoop under 60" W
Two scoops over 60" W



european/relaxed roman shade: nasco, french grey



front slats roman shades: twilight, oatmeal
with rod pocket drapery panel pair featured on satin nickel decorative rod: everest II, stone

FRONT SLATS

Add some drama to a plain fabric with this structured, contemporary look.

> The face of the shade has slats sewn into pockets that give the shade a precise look. This is a structured, contemporary look that requires minimal dressing.

FRONT SLATS		
	minimum	maximum
width	12"W	48"W
length	16"L	120"L

NO WIDTHS OVER 48"W
(due to the nature of the shade construction)



front slats roman shades: wilmington, moonlight
with grommet drapery panel pair featured on satin nickel decorative rod: vibrato, grey

BANDED OPTION FOR ROMAN SHADES



plain classic pleated roman shades with standard lining:
wilmington, white with 2-sided navy inset ribbon banding

2" SOLID BANDING COLORS



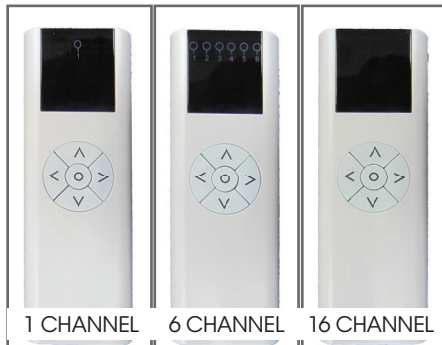
flat fold roman shades with standard lining:
lexi, white with 3-sided grey edge ribbon banding

ROMAN SHADE LIFT SYSTEM UPGRADE OPTIONS

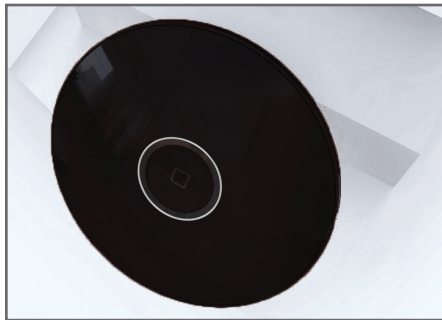
LIFT	CORDLESS	CONTINUOUS CHAIN OPERATION (CCO) aka: CHAIN DRIVE	MOTORIZED MOTORWAND	MOTORIZED REMOTE CONTROL				
HEAD RAIL	PVC head rail w/velcro	fabric-wrapped wood head rail						
SHADE STYLES	<ul style="list-style-type: none"> • PLAIN PLEATED • FLAT FOLD • SOFT FOLD 	<ul style="list-style-type: none"> • PLAIN PLEATED • FLAT FOLD • SOFT FOLD • FRONT SLATS • EURO RELAXED* 	<ul style="list-style-type: none"> • PLAIN PLEATED • FLAT FOLD • SOFT FOLD • FRONT SLATS 	<ul style="list-style-type: none"> • PLAIN PLEATED • FLAT FOLD • SOFT FOLD • FRONT SLATS 				
INSIDE MOUNT (IM)								
OUTSIDE MOUNT (OM)								
SIDE RETURNS	OM includes returns							
DEPTH REQ.	2" depth	2 1/4" depth on IM if shade is less than 58" x 58" 3 1/4" depth on OM and IM greater than 58" x 58"						
MINIMUM & MAXIMUM GUIDELINES								
	MIN	MAX	MIN	MAX	MIN	MAX	MIN	MAX
WIDTH	18"	84"	12"/*ER: 30"	115"	20"	115"	20"	72"
LENGTH	18"	84"	24"	120"	24"	120"	24"	72"
DEDUCTIONS	IM = 1/4" by factory / OM = no deduction							

RECHARGEABLE BATTERY MOTORS

Wirefree, rechargeable & easy to use.
 All motors are powered by lithium ion batteries that are fully contained & concealed within the shade tube.



BATTERY MOTOR



HUB FOR APP



- PHASE II BASIC motor P2 Powermate
- > 25MM motor
- > Rechargeable in-tube battery
- > Remote Control or
- > P2 Powermate WiFi Hub
 - Device Control thru P2 Powermate app
 - Voice Control thru both Amazon Alexa & Google Home hub devices

MOTORS/REMOTES/HUB			
When pricing motorization, you must choose the CCO lift option THEN ADD ON the motor (in addition to CCO).			
	MAX. WEIGHT	MIN. W x L	MAX. W x L
PHASE II BASIC (25mm)	10 lbs	20"W x 24"L	84" x 102"



MOTORWAND:

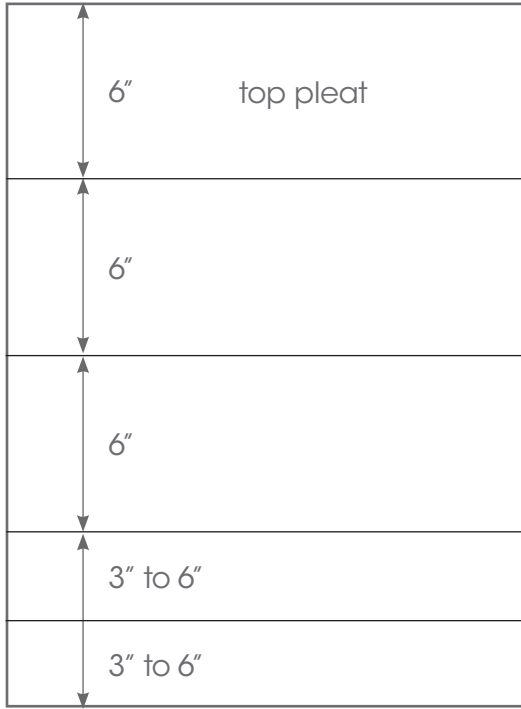
- > Wand connects to re-chargeable in-tube motor
- > No programming, no remote
- > Charging cable connects to bottom of wand for easy re-charging



ROMAN SHADE CONSTRUCTION

PLEAT BREAKS

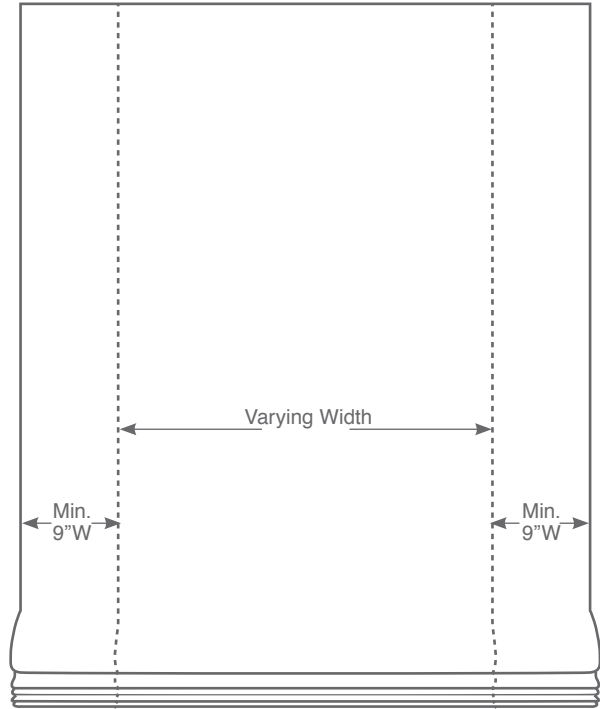
PLAIN CLASSIC PLEATED, SOFT FOLD, FRONT SLATS



- Built from top - down only
- Useful for different size windows which are next to each other
- The bottom pleat will vary from 3" to 6"

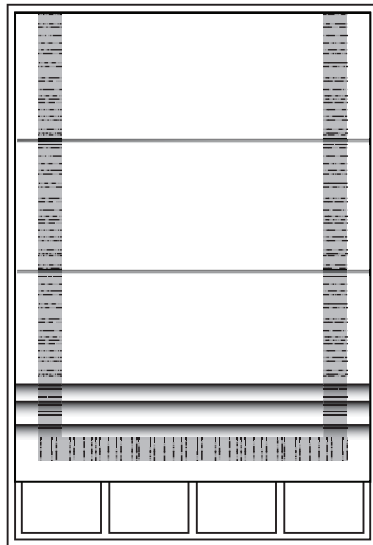
VERTICALLY SEAMED ROMAN SHADES

ALL SHADES OVER 48"



- Over 48" wide, shades will be made with a varying width center panel and side panels seamed to a minimum of 9" wide on both sides.

RIBBON BANDING PLACEMENT OPTIONS



ribbon banding - **inset, 3 sides:**
bottom & vertically



ribbon banding - **edge, 3 sides:**
bottom & vertically

BE A SAFETY SMART WINDOW COVERING CONSUMER
MAKE CHILD SAFETY YOUR #1 CONSIDERATION
WHEN SELECTING WINDOW COVERINGS

When the chain loop on window coverings is accessible to young children,
a potential strangulation hazard exists.

Any free hanging or exposed chain loop is potentially dangerous.

Cordless blinds & shades, and other solutions are now available to minimize this risk
– scroll down to find additional information.

ANSI/WCMA A100.1-2022

Revision of ANSI/WCMA A100.1-2018

Approved December 13, 2022

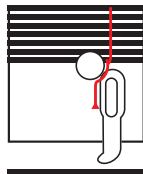
PROMOTES AND ENCOURAGES ADHERENCE TO
LABELING AND OPERATIONAL TAG REQUIREMENTS

GENERIC WARNING BOTTOM RAIL LABEL

		<p>Window Blind Cord Strangulation Risk A damaged, loose, or missing tension device poses a strangulation risk to children. Remove from use and repair or replace if tension device is damaged, loose, or missing</p> <p>Riesgo de Estrangulamiento con Cordón de la Persiana Un dispositivo de tensión dañado, suelto o ausente presenta riesgo de estrangulamiento para niños. Retire y repare o reemplace si el dispositivo tensor está dañado, flojo o ausente</p>
--	--	--

TENSION DEVICES FOR CHAIN LOOPS

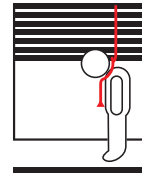
! WARNING



Products with a Damaged, Loose, or Missing, Tension Device Pose a Strangulation Risk to Children

- This Window Blind is equipped with a Tension Device
- Remove from use and repair or replace if tension device is damaged, loose, or missing
- Tension device must be securely attached to wall or floor
- Children can climb on furniture to reach cords
- Fasteners provided with tension device may not be appropriate for all mounting surfaces
- Use appropriate anchors for mounting surface conditions
- Tag to be removed only by end-user

! ADVERTENCIA



Productos con un Dispositivo de Tensión Dañado, Flojo o Faltante, presentan riesgo de estrangulamiento para niños

- Esta persiana está equipada con un dispositivo tensor.
- Retire del uso y repare o reemplace si el dispositivo tensor está dañado, flojo o falta
- El dispositivo tensor debe estar firmemente sujeto a la pared o al piso.
- Los niños pueden subirse a los muebles para alcanzar los cables.
- Es posible que los sujetadores provistos con un dispositivo de tensión no sean apropiados para todas las superficies de montaje.
- Utilice anclajes adecuados para las condiciones de la superficie de montaje.
- Etiqueta que debe eliminar solo el usuario final

LIMITED LIFETIME WARRANTY

Phase II Warranty, Repairs & Remake Policy

Remakes: we approve internally and upon our discretion.

We remake 100% free for manufacturer defects:

- defective mechanism/function
- material flaws
- defective sewing
- broken lift system
- raising / hanging crooked
- wrong fabric: color, face, direction
- wrong measurements
- wrong ship to / wrong customer
- wrong input entry by Phase II staff if applicable to the order

We OOPS satisfaction warranty -25%:

1. Customer input error
2. Homeowner general dissatisfaction / product not as expected.

We offer Limited Lifetime Warranty

Phase II does not have 5 year NQA on any product

- 3 years on exterior & inner cords, chains, clutches & cordless lifts
- 5 years on SHC Li-Ion rechargeable battery motors – if defective, covered by the warranty, we will repair or replace it free of charge.
- 5 years on fabrics – colorfastness & durability
- 25 years on Solar SunScreen mesh fabrics (cover tearing, wearing, sun fading) in the Simply Solar & More Rollers program.

Warranty Remedy:

THIS SHALL BE YOUR SOLE REMEDY UNDER THIS LIMITED WARRANTY. If this product is found to have a manufacturing defect in materials or workmanship, we will (at our discretion) do one of the following:

- replace the product
- send parts
- refund the cost of the product

Colors vary from lot to lot and may not exactly match sample swatch or previous purchases.

Discontinued items or color selections will be replaced with the closest equivalent current product.

YOUR RIGHTS UNDER STATE LAW:

This lifetime limited warranty gives you specific legal rights, and you may have other rights, which vary from state to state. Some states do not allow limitations on how long a warranty lasts, so the above limitations may not apply to you.

No agent, representative, dealer, or unauthorized employee has the authority to increase or alter the obligation of this warranty. This lifetime limited warranty supersedes any previous versions.

For all questions, please call 800-264-1190

Hours of operation: 8:00am-5:00pm CST

There is no electronic process at Phase II to auto-process ones' own repairs, remakes, warranty claims due to general low volume and internal office needs to apply codes and verify claims.

May 2024 Phase II Inc. – 800-264-1190 – customerservice@phaseii.com – www.phaseii.com

NEED ASSISTANCE?



800.264.1190



customerservice@phaseii.com

www.phaseii.com

